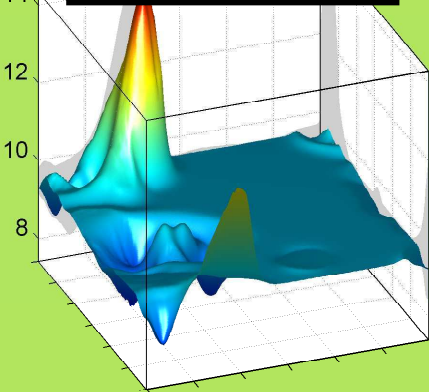
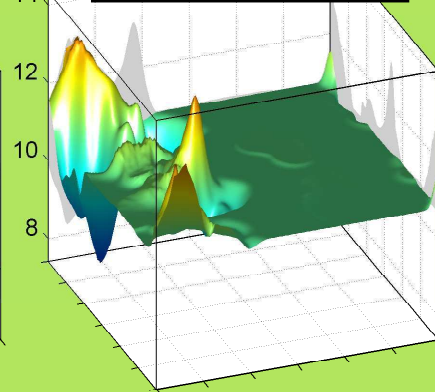


TRP: $\sigma_{\chi_1}(\phi, \psi | r = \langle g^+, a \rangle)$, 15.65%



TRP: $\sigma_{\chi_1}(\phi, \psi | r = \langle t, a \rangle)$, 34.01%



TRP: $\sigma_{\chi_1}(\phi, \psi | r = \langle g^-, a \rangle)$, 50.35%

