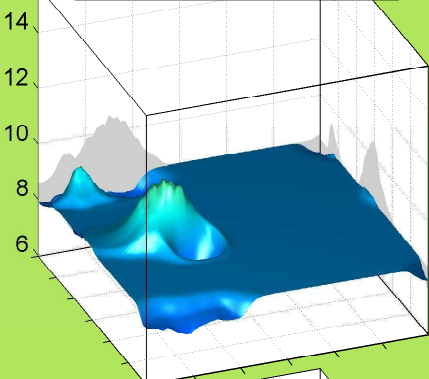
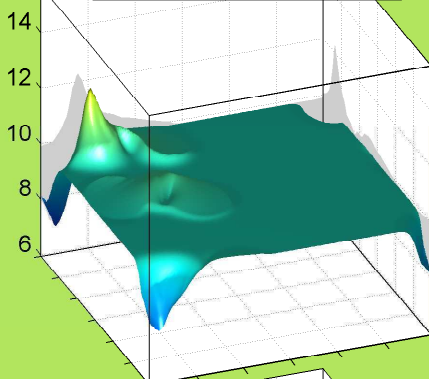


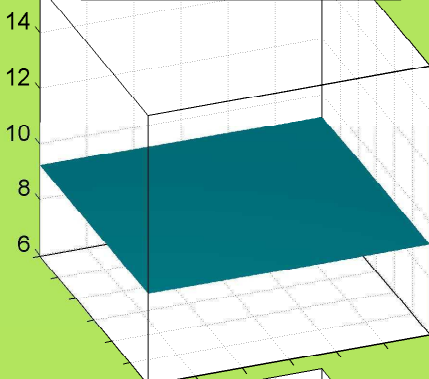
LEU: $\sigma_{\chi_1}(\phi, \psi | r = \langle g^+, g^+ \rangle)$, 0.81%



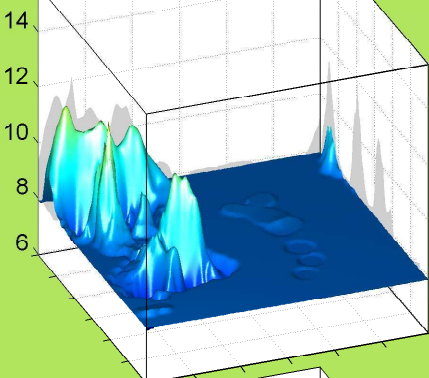
LEU: $\sigma_{\chi_1}(\phi, \psi | r = \langle g^+, t \rangle)$, 0.44%



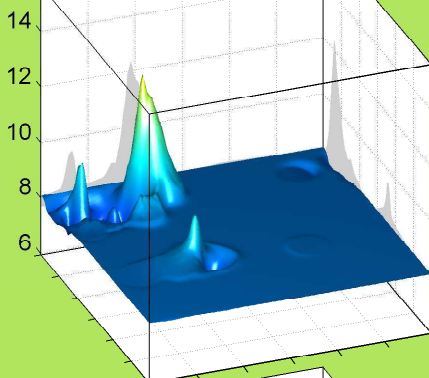
LEU: $\sigma_{\chi_1}(\phi, \psi | r = \langle g^+, g^- \rangle)$, 0.02%



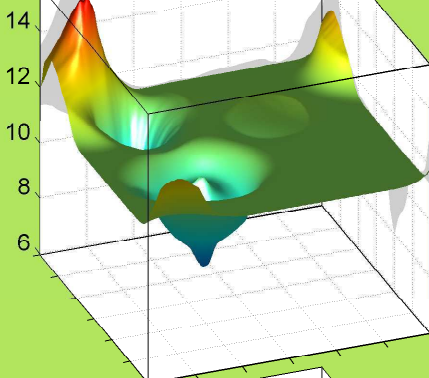
LEU: $\sigma_{\chi_1}(\phi, \psi | r = \langle t, g^+ \rangle)$, 30.55%



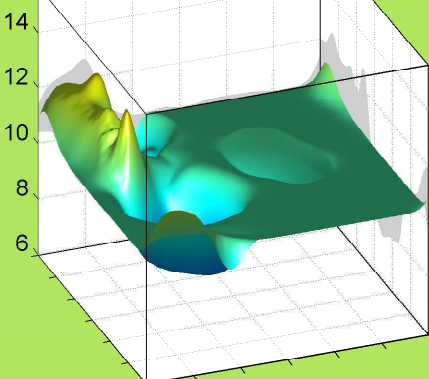
LEU: $\sigma_{\chi_1}(\phi, \psi | r = \langle t, t \rangle)$, 2.27%



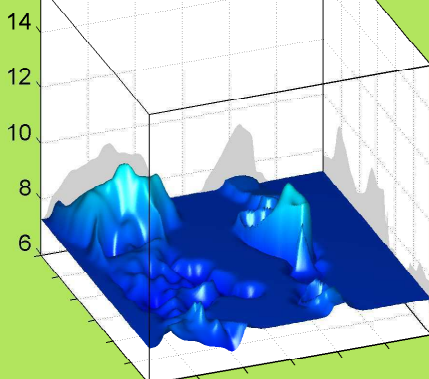
LEU: $\sigma_{\chi_1}(\phi, \psi | r = \langle t, g^- \rangle)$, 0.35%



LEU: $\sigma_{\chi_1}(\phi, \psi | r = \langle g^-, g^+ \rangle)$, 2.92%



LEU: $\sigma_{\chi_1}(\phi, \psi | r = \langle g^-, t \rangle)$, 62.01%



LEU: $\sigma_{\chi_1}(\phi, \psi | r = \langle g^-, g^- \rangle)$, 0.63%

