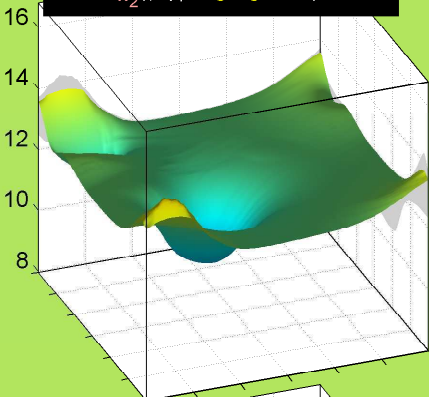
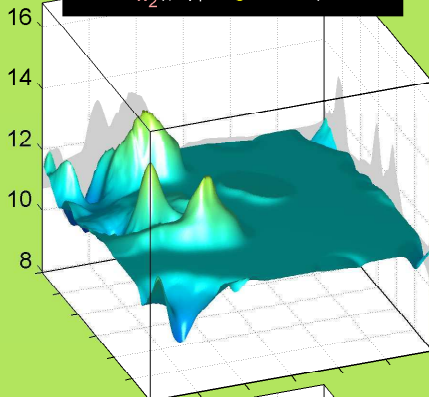


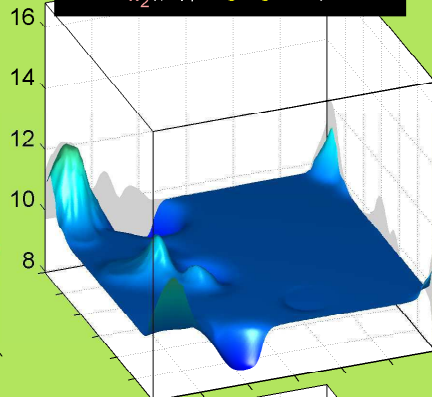
GLU:  $\sigma_{\gamma_2}(\phi, \psi | r = \langle g^+, g^+, al \rangle)$ , 0.33%



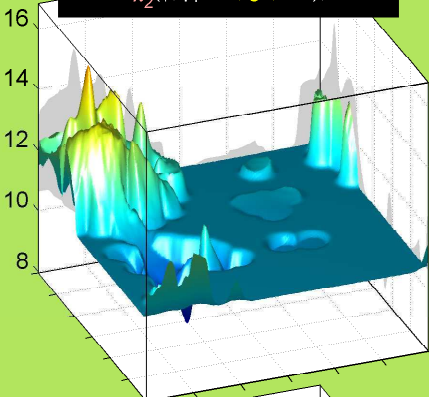
GLU:  $\sigma_{\gamma_2}(\phi, \psi | r = \langle g^+, t, al \rangle)$ , 5.22%



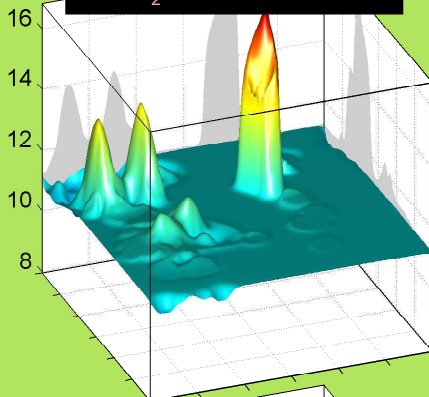
GLU:  $\sigma_{\gamma_2}(\phi, \psi | r = \langle g^+, g^-, al \rangle)$ , 2.47%



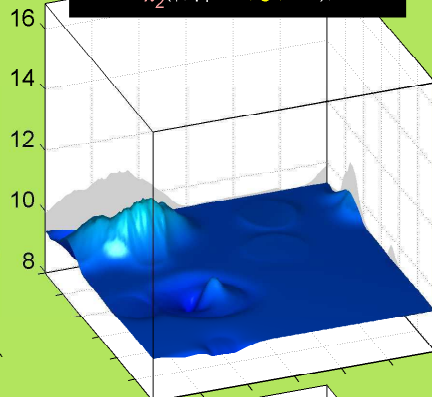
GLU:  $\sigma_{\gamma_2}(\phi, \psi | r = \langle t, g^+, al \rangle)$ , 8.25%



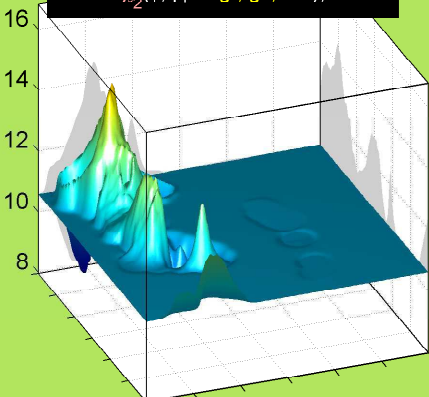
GLU:  $\sigma_{\gamma_2}(\phi, \psi | r = \langle t, t, al \rangle)$ , 23.84%



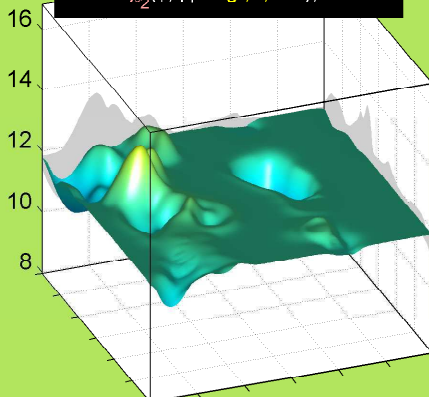
GLU:  $\sigma_{\gamma_2}(\phi, \psi | r = \langle t, g^-, al \rangle)$ , 1.52%



GLU:  $\sigma_{\gamma_2}(\phi, \psi | r = \langle g^-, g^+, al \rangle)$ , 6.38%



GLU:  $\sigma_{\gamma_2}(\phi, \psi | r = \langle g^-, t, al \rangle)$ , 36.46%



GLU:  $\sigma_{\gamma_2}(\phi, \psi | r = \langle g^-, g^-, al \rangle)$ , 15.53%

