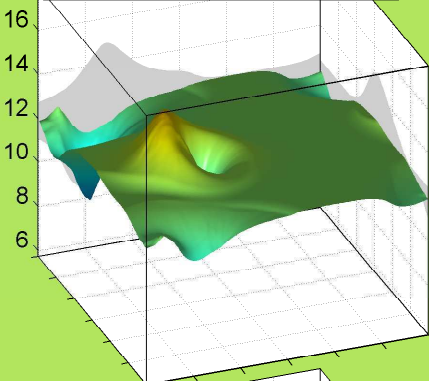
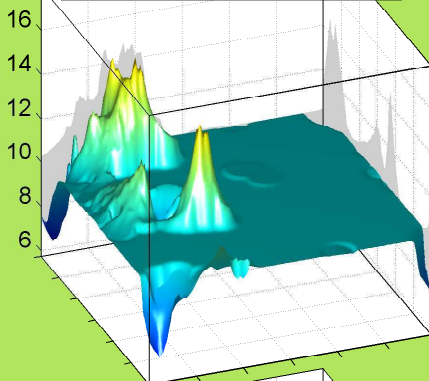


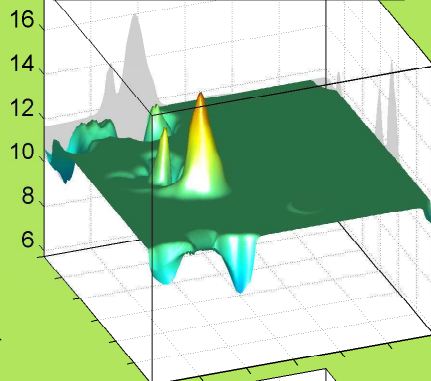
GLU: $\sigma_{\chi_1}(\phi, \psi | r = \langle g^+, g^+, al \rangle)$, 0.33%



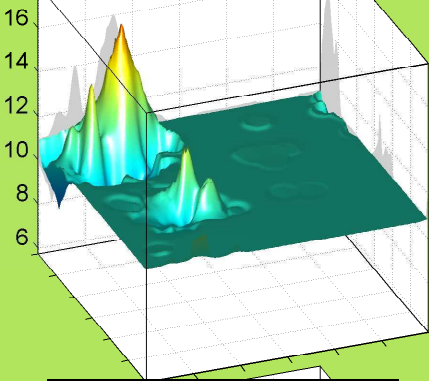
GLU: $\sigma_{\chi_1}(\phi, \psi | r = \langle g^+, t, al \rangle)$, 5.22%



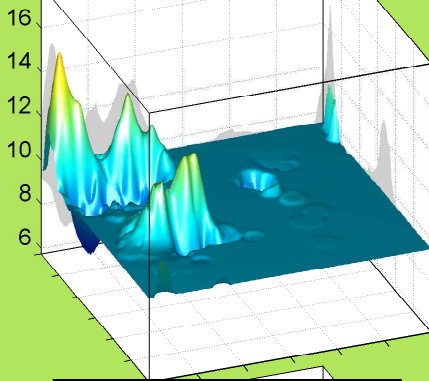
GLU: $\sigma_{\chi_1}(\phi, \psi | r = \langle g^+, g^-, al \rangle)$, 2.47%



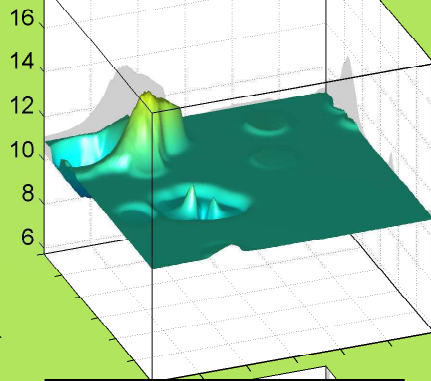
GLU: $\sigma_{\chi_1}(\phi, \psi | r = \langle t, g^+, al \rangle)$, 8.25%



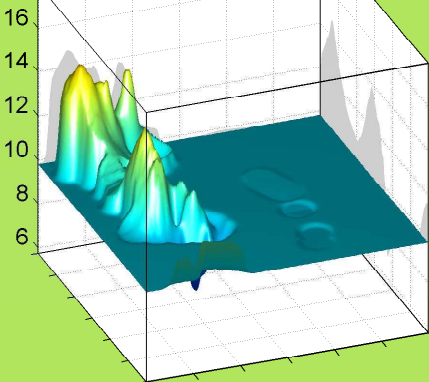
GLU: $\sigma_{\chi_1}(\phi, \psi | r = \langle t, t, al \rangle)$, 23.84%



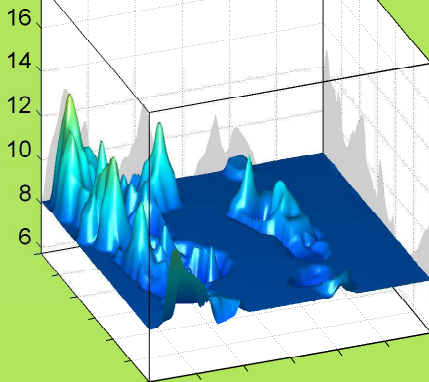
GLU: $\sigma_{\chi_1}(\phi, \psi | r = \langle t, g^-, al \rangle)$, 1.52%



GLU: $\sigma_{\chi_1}(\phi, \psi | r = \langle g^-, g^+, al \rangle)$, 6.38%



GLU: $\sigma_{\chi_1}(\phi, \psi | r = \langle g^-, t, al \rangle)$, 36.46%



GLU: $\sigma_{\chi_1}(\phi, \psi | r = \langle g^-, g^-, al \rangle)$, 15.53%

